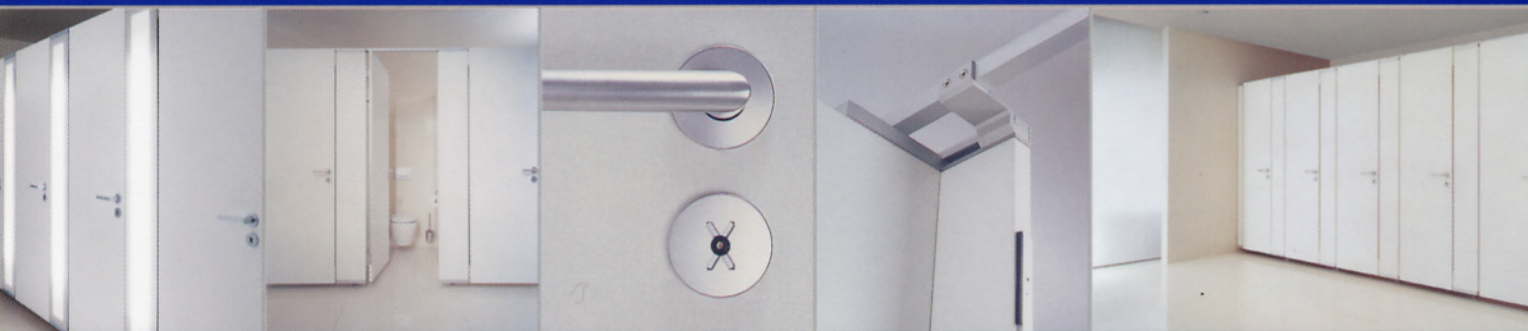


**NOXX®** | cubicle system









**NOXX®**



**NOXX® | consistent design**



#### **Extraordinary design sets the benchmark**

First impressions tell you it's a great design – that second look proves it. During the development we attached great importance to continuous design, starting with the overall picture down to details such as the NOXX® red/silver indicator, the screw connections, hinges and aluminium profiles.

The high level of design complements the quality of the product and the longevity of NOXX. KEMMLIT stands for outstanding functionality and durability even under constant use.



#### **Developed by architects for architects**

Well balanced proportions combined with clever reduction, that is the trademark of architects Wolfram Wöhr and Jörg Mieslinger.

In collaboration with KEMMLIT, the cubicle system NOXX® was developed. It gives architects and planners the opportunity to design sanitary fittings to meet even the highest requirements regarding design.





#### **KEM-PRIVACY** | security in functioning

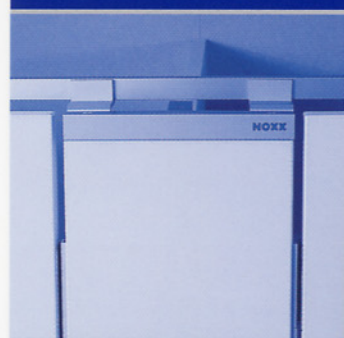
Cubicle systems are designed to ensure the privacy of the user. NOXX® masters this better than any other common cubicle system. Reduction of under panel clearance and increased overall height clearly provides this facility.

#### **KEM-JOINT** | precision to a millimetre

Persuasive presentation of groundbreaking design: joints of only a few millimetres width demonstrate the first class quality and accuracy of the construction. The cubicle front is structured in a unique fashion, with both wide and narrow aluminium profiles.

#### **KEM-FRIEZE** | suspended in space

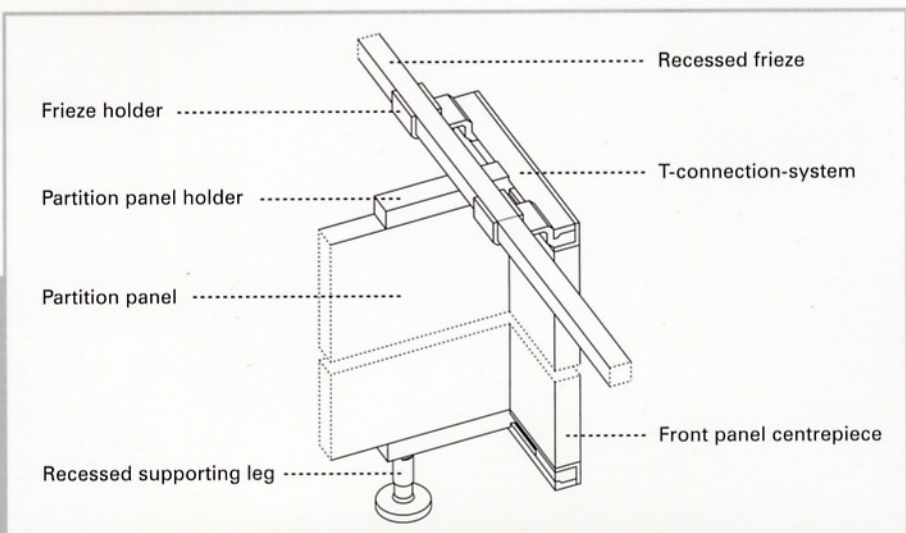
NOXX® is lightness affecting the entire room. No supporting legs or suspensions can be seen. Nothing distracts from the smooth surface of the cubicle front. It is an intricate construction striking a new path.



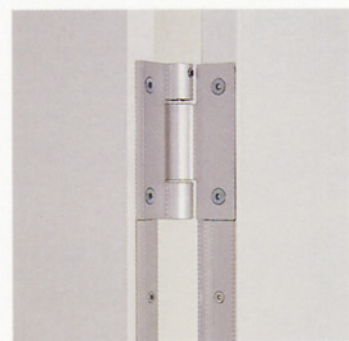




Recessed frieze with T-connection



KEM-FRIEZE construction in detail, giving NOXX® the character of a suspended cubicle.

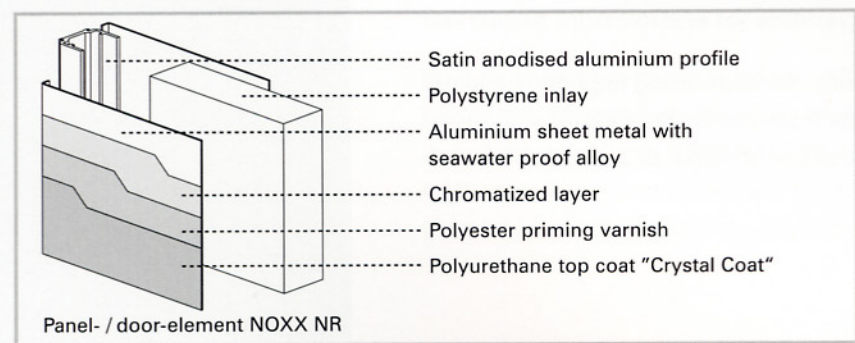


**Hinges:**  
Three-roller-edge-hinge developed by KEMMLIT, made of aluminium Ø 20 mm, maintenance-free plain bearing bush and 8 mm stainless steel pin, solid screw connection with TORX-screws.  
Spring hinge available as an option.

**Supporting legs:**  
Stainless steel with Ø 20 mm circular tube and cover sleeve guarantee corrosion resistance and stability.  
Easy to clean construction.  
Continuously adjustable height.

**Furniture:**  
Aluminium lever door handle Ø 23 mm, double latch WC lock, NOXX red / silver indicator with emergency opening.

**Door-stop:**  
Flush closing door stop with integrated buffer to reduce closing noise.



Panel- / door-element NOXX NR

**Panel and door elements:**  
NOXX® is available in two variants. NOXX NR made of aluminium for wet areas and NOXX TR made of high density melamine resin coated particle board for dry areas.  
For wet areas the multilayered stove-enamelling Crystal Coat guarantees scratch and abrasion resistance and is impervious to ultra-violet light.

**Profiles:**  
NOXX NR has a special profile lipping. NOXX TR is protected by a 3 mm ABS lipping. Both variants have additional door stop profiles made of high-grade aluminium with satin anodised surface.

**Colours:**  
NOXX® colour chart with the three colour groups KLASSIK / ELEGANT / TREND offers a wide range of colours for both front panel and door elements.

(Please refer to the NOXX® colour chart for details)



## NOXX® | planning aids

### Panel and door elements:

wet area: NOXX NR 30 mm thick aluminium composite construction  
dry area: NOXX TR 30 mm thick high density melamine resin coated particle board

**Height:** 2135 mm doors and panels (2167 mm recessed frieze)

### Under panel clearance:

70 mm, height adjustable range +20 / -10 mm

**Door width:** 570 mm, 650 mm, 750 mm

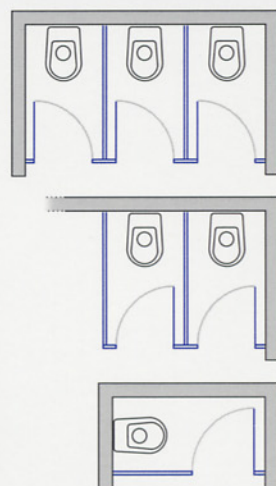
### Front panel centrepiece:

180 mm up to 320 mm

**Cubicle depth:** up to 1600 mm

**Cubicle width:** range of two cubicles and more 750 mm up to 1050 mm  
single cubicles 810 mm up to 2500 mm

Please refer to our representative in your vicinity for specification sheets or visit our website at [www.kemmlit.com](http://www.kemmlit.com)



Examples of possible layouts

## NOXX® | additional products

### Modesty screen:

Made of toughened safety glass with stainless steel panel holder, width 425 mm x height 825 mm. Also available full height with supporting leg.

### Light element:

Aluminium carcass front panel centrepiece, colour white with satin glass front and integrated fluorescent tubes (220 V).

(For further accessories please refer to the NOXX® accessory brochure)



## KEMMLIT® | ten good reasons

1. 100 years of experience and market leadership
2. extensive product range
3. product innovation with top design
4. top quality regarding material and processing
5. harmonising solutions
6. consulting service by our sales representatives
7. quick quotation processing
8. prompt and on schedule delivery
9. professional installation on site
10. all done by one source

Further informations: [www.kemmlit.com](http://www.kemmlit.com)



**Individual  
sanitary fittings  
by KEMMLIT**

**For example:**

Changing cubicles  
Toilet cubicles  
Shower cubicles  
Locker systems  
Vanitory units  
Shelving  
Bench seating  
Baby changing stations  
Doors and frames

**KEMMLIT-  
Bauelemente GmbH**

Maltschachstraße 37  
D-72144 Dusslingen

Tel.: +49 (0) 7072/131-0  
Fax: +49 (0) 7072/131-150

[www.kemmlit.com](http://www.kemmlit.com)  
[info@kemmlit.de](mailto:info@kemmlit.de)

ESPECIALISTAS EM CONSTRUÇÃO DE INTERIORES



Rua da Esperança, 17 - Raposeiras  
2725-505 Mem Martins - Portugal  
TEL: +351 21 967 74 60 - FAX: +351 21 967 74 79  
[info@eurodivisal.com](mailto:info@eurodivisal.com) - [www.eurodivisal.com](http://www.eurodivisal.com)

