

BASIC | WC cubicles





One programme – many advantages page 3

Type C-BASIC
– the extremely sturdy WC cubicle made of HPL page 4/5

Type D-BASIC
– the inexpensive WC cubicle made of resin coated particle board page 6/7

Type E-BASIC
– the elegant WC cubicle made of steel sheet composite elements page 8/9

Planning aid page 10

Complementary products page 10

Colour chart page 11

KEMMLIT – ten good reasons page 11



BASIC | one programme – many advantages

- Top design and top quality.
KEMMLIT's BASIC WC cubicles offer high-quality, attractive solutions for practically any situation.
- Clever construction.
Reliable materials and decades of experience in development guarantee maximum stability and durability.
- Affordable and on-time delivery.
Whether for wet or dry areas – BASIC offers suitable WC cubicles exactly when you need them.
- Keeping to the essentials.
The BASIC cubicle system consists of:
3 types of cubicles
8 colours
4 door widths
2 heights
countless layout variants
- One-stop solution.
From free consulting to professional installation, KEMMLIT stands for reliable and competent service.
- Your capable partner.
As market leader, we combine both tradition and innovation. With KEMMLIT, you are in safe hands.
- The right decision.
Benefit from the price advantage of an elaborate system without loss of quality, visual impact or individuality. It's worth its weight in gold!



Type C-BASIC | the extremely sturdy WC cubicle made of HPL (High Pressure Laminate)



Type C-BASIC is ideal for both wet and dry areas with high stability, durability and hygiene requirements, due to heavy-duty usage.

The unique static interconnection of aluminium sections as well as the high-quality fittings are characteristic for this system. The headrail consists of an extremely sturdy three-chamber stabiliser. All screw connections are solid. This guarantees continuous and trouble-free performance.

Panels and doors are made of 13 mm, water-resistant, solid grade laminate HPL panels with machine-milled edges. In addition to the decorative layer, the panels have a protective overlay and are therefore scratch-, wear- and abrasion-resistant.

The aluminium supporting legs have a solid, nylon cover sleeve and are infinitely height-adjustable to compensate for deviations in floor level of up to 30 mm. Alternatively, supporting legs are also available made of stainless steel.

The beautifully designed aluminium lock cover plate with sturdy zinc diecast lock is user-friendly and prevents material fatigue.

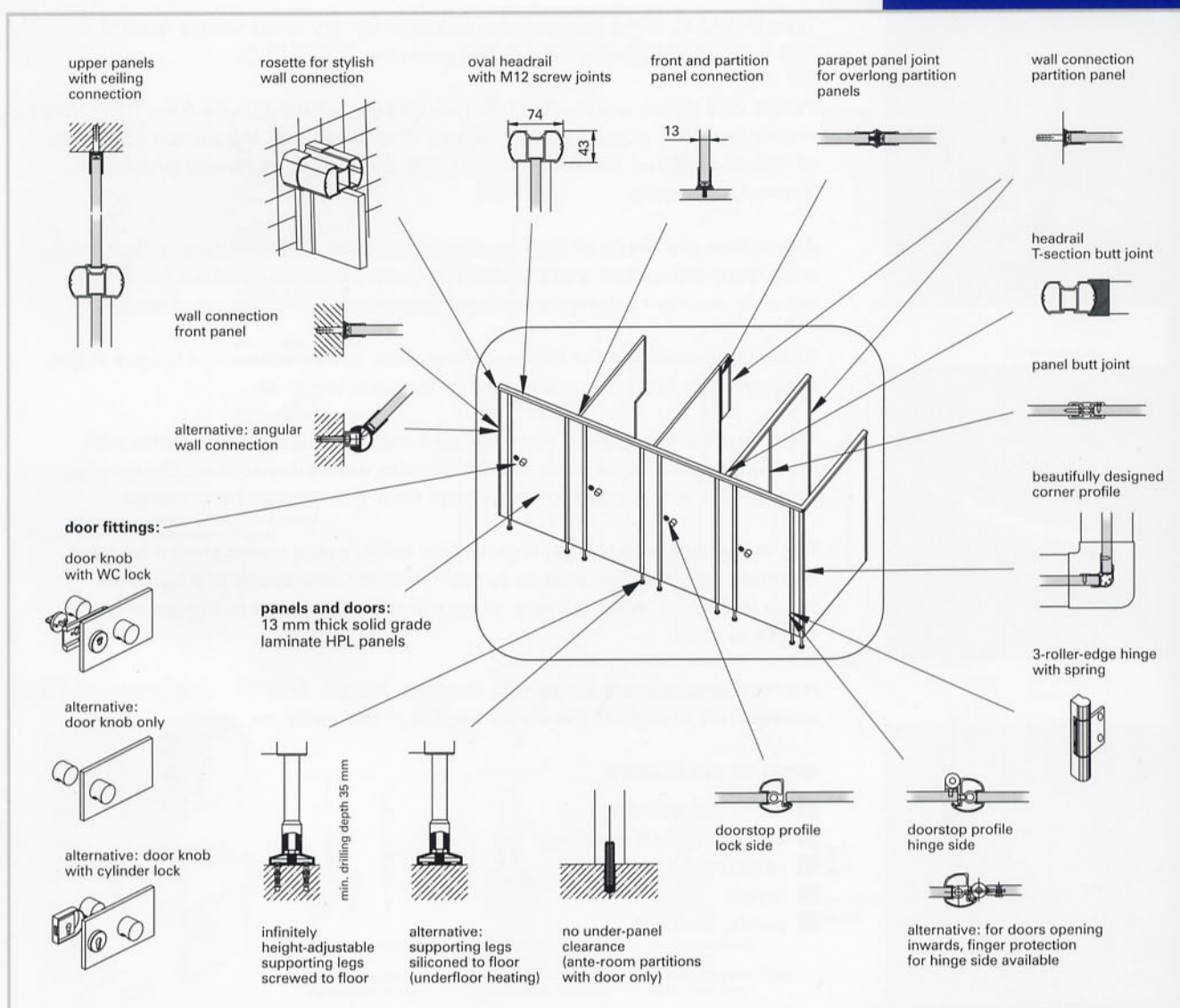
The sturdy, three-roller edge hinges made of aluminium feature maintenance-free bearing bushes and are screwed, hidden from sight, to the face of the panel. Also available with finger protection!

All doors can be installed either with automatic closing or opening. End-to-end rubber buffers in the doorstop profiles ensure quiet closing.

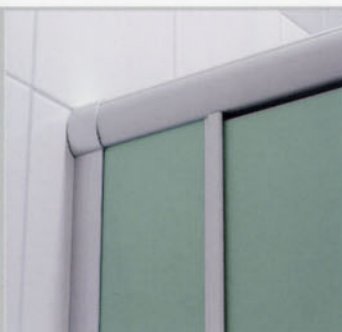
Harmonising colours for panels, profiles, hinges, furniture, supporting legs and accessories round off the visual impact of the cubicles.

Areas of application:

- | | |
|----------------------------|-------------------------------|
| ■ schools | ■ sports- and leisure centres |
| ■ universities | ■ camp sites |
| ■ industrial buildings | ■ hotels |
| ■ administration buildings | ■ restaurants |
| ■ hospitals | ■ public facilities |



Type D-BASIC | the inexpensive WC cubicle made of resin coated particle board



Type D-BASIC is the inexpensive solution for dry areas where quality, stability and harmonising design are of the essence.

Panels and doors are made of 30 mm sturdy, formaldehyde-free, high-density melamine resin-coated particle board. The surface of the panels consists of directly applied melamine resin coating. The edges have a protective, 3 mm ABS lipping.

All profiles are made of high-quality aluminium. The furniture is beautifully integrated into doors and panels. The warp-resistant headrail, available either in oval or rectangular design, guarantees long-lasting stability.

Specially developed for high requirements, the 2-roller-edge hinges made of aluminium feature a maintenance-free bearing bush.

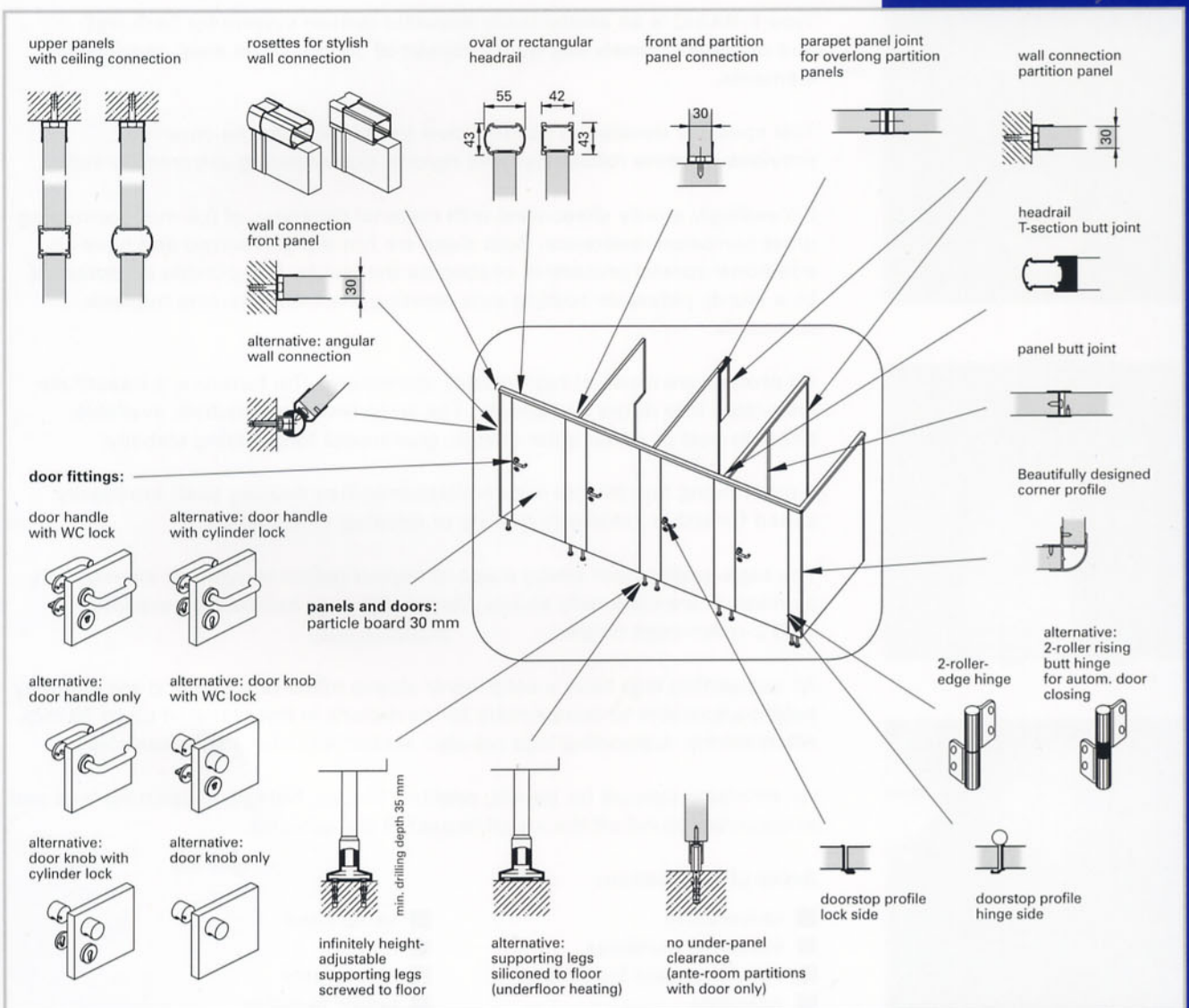
The beautifully designed door handles made of high-quality nylon with metal core, or alternatively aluminium, are extremely robust. Optionally, door knobs with hinges for automatic door closing can be installed.

The aluminium supporting legs have a solid, nylon cover sleeve and are infinitely height-adjustable to compensate for deviations in floor level of up to 30 mm. Alternatively, supporting legs are also available made of stainless steel.

Harmonising colours for panels, profiles, hinges, fittings, supporting legs and accessories round off the visual impact of the cubicles.

Areas of application:

- industrial buildings
- administration buildings
- restaurants
- hotels
- public facilities



Type E-BASIC | the elegant WC cubicle made of steel sheet composite elements



Type E-BASIC is an aesthetically beautiful cubicle system for both wet and dry areas. Panels and doors consist of 30 mm sheet steel composite elements.

This specially developed construction combined with the core inlay provides extreme robustness and rigidity, guaranteeing extreme durability.

Exceedingly sturdy sheet-steel with material thickness of 0,6 mm possessing great corrosion resistance. Both sides are hot-dip galvanized and have an additional special protective coating on the inside. The outside is protected by a sturdy polyester coating thus meeting the most exacting hygienic standards.

All profiles are made of high-quality aluminium. The furniture is beautifully integrated into doors and panels. The warp-resistant headrail, available either in oval or rectangular design, guarantees long-lasting stability.

2-roller rising butt hinges with maintenance-free bearing bush are ideally suited for either automatic closing or opening of the doors.

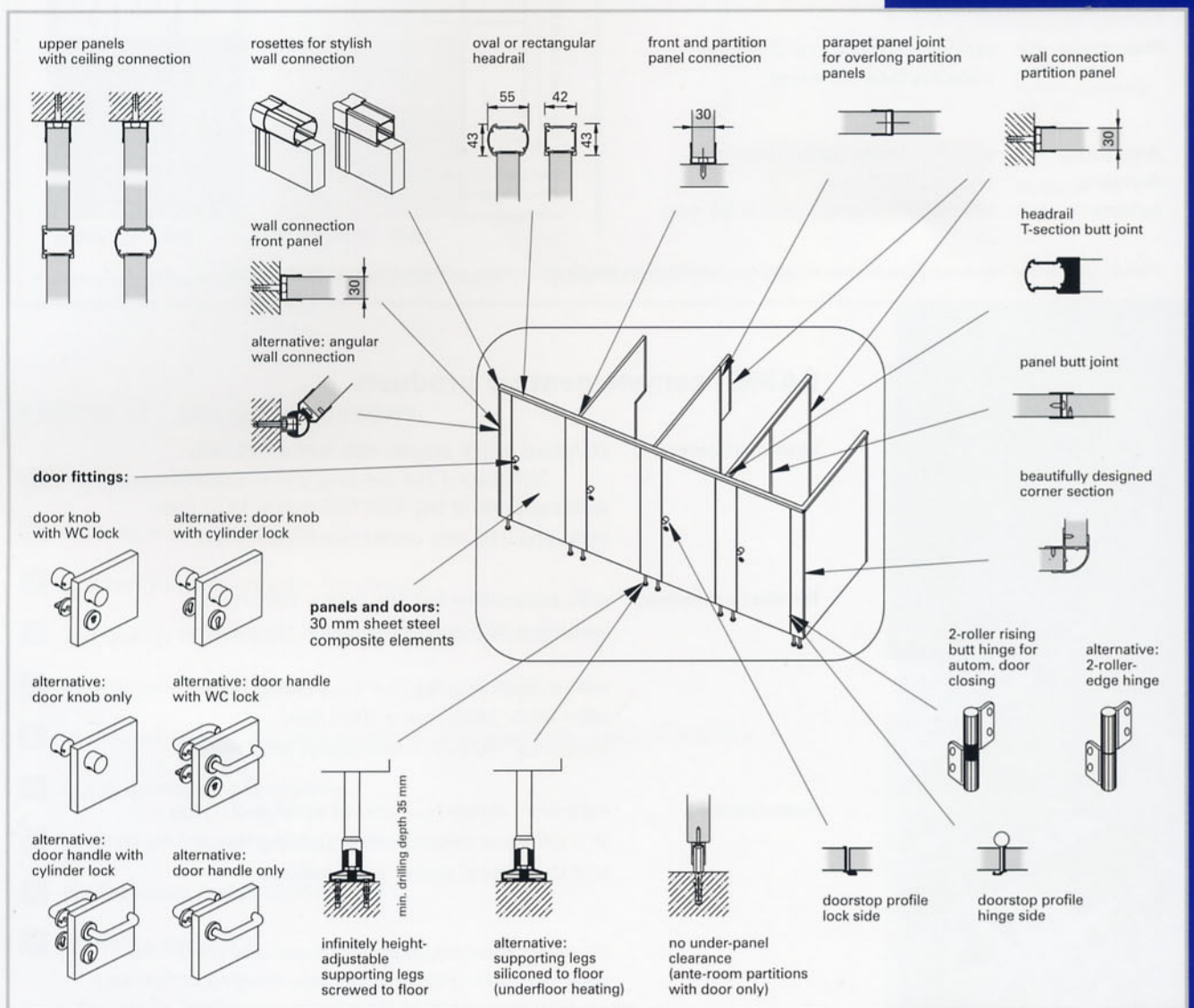
The high-quality door knobs made of impact resistant nylon or alternatively aluminium are extremely sturdy. Optionally, door handles are available with 2-roller-edge hinges.

All supporting legs have a solid cover sleeve made of nylon and are infinitely height-adjustable to compensate for deviations in floor level of up to 30 mm. Alternatively, supporting legs are also available made of stainless steel.

Harmonising colours for panels, profiles, hinges, fittings, supporting legs and accessories round off the visual impact of the cubicles.

Areas of application:

- | | |
|----------------------------|---------------------|
| ■ universities | ■ camp sites |
| ■ industrial buildings | ■ hotels |
| ■ administration buildings | ■ restaurants |
| ■ hospitals | ■ public facilities |



Cubicle height: 2000 mm panels and doors,
alternative 2135 mm for type
C-BASIC and D-BASIC

Upper panel: max. 2650 mm room height

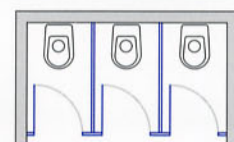
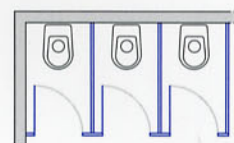
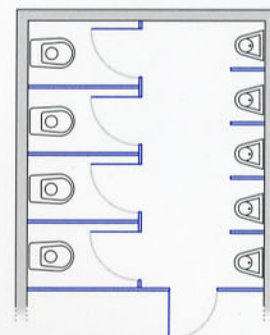
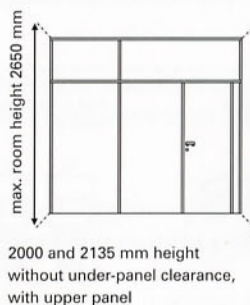
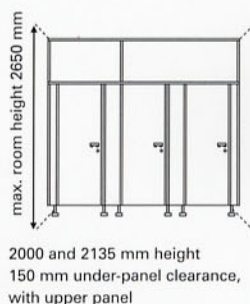
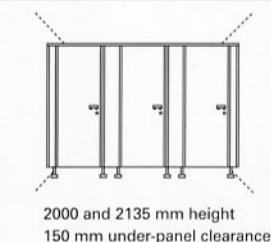
**Under-panel:
clearance:** 150 mm,
adjustable +25 / -5 mm

Door width: 570 mm
640 mm (Type E 620 mm)
750 mm
950 mm
(nominal size)

Cubicle depth: up to 2000 mm (standard 1600 mm)

Plan view: range of cubicles or diagonal
cubicles (see drawing)

**Anteroom
dividing
cubicle:** without under-panel clearance,
height: 2000 mm,
with upper panel up to 2650 mm



Please refer to our representative in your vicinity for specification sheets or visit our website at www.kemmlit.com



BASIC | complementary products

Urinal screens: standard urinal screen 435 mm x 825 mm

with supporting leg 435/600 mm x 1475 mm
including 150 mm under-panel clearance

Modesty screens: with supporting leg 600 mm x 2000 mm
including 150 mm under-panel clearance

with supporting leg and supporting column
800/1000/1200 mm x 2000 mm
including 150 mm under-panel clearance

Accessories: extensive range in stainless steel and nylon
in 5 different colours. Harmonising design
and theft-proof screw connections.



For details regarding accessories (brush sets, coat hooks,
paper roll holder, graffiti-cleaner, baby changing stations etc.),
see our brochure KEMMLIT accessory programme.

panels and doors:

HPL/particle board/steel	HPL/particle board	HPL/particle board/steel
		
white 9095	peppered white 9095P	pale grey 7095
HPL/particle board	HPL/particle board	HPL/particle board
		
pale yellow 1095	pale green 6095	pale blue 5095
HPL/particle board	HPL/particle board	
		
anthracite 7603	beechwood 0304	

Profiles, hinges, furniture, ABS lipping, supporting legs and accessories:

	white 02
	manhattan 05
	red 11
	dark blue 04
	yellow 10
	satin anodised 08 (profiles, hinges, furniture, supporting legs only)
	multiplex 14 (ABS lipping only)

Due to typographic reasons, the colours shown may differ slightly from the original colour.

KEMMLIT | ten good reasons

1. 100 years of experience and market leadership
2. extensive product range
3. product innovation with top design
4. top quality in terms of material and processing
5. harmonising solutions
6. individual consulting service by professional sales representatives
7. quick quotation processing
8. prompt and on-schedule delivery
9. professional installation on site
10. one-stop service



For further information: www.kemmlit.com

**Individual
sanitary fittings
by KEMMLIT**

For example:

Changing cubicles
Toilet cubicles
Shower cubicles
Locker systems
Vanitory units
Shelving
Bench seating
Baby changing stations
Doors and frames

**KEMMLIT-
Bauelemente GmbH**

Maltschachstraße 37
D-72144 Dusslingen

Tel.: +49 (0) 70 72 / 1 31-0
Fax: +49 (0) 70 72 / 1 31-150

www.kemmlit.com
info@kemmlit.com

ESPECIALISTAS EM CONSTRUÇÃO DE INTERIORES



Rua da Esperança, 17 - Raposeiras
2725-505 Mem Martins - Portugal
TEL: +351 21 967 74 60 - FAX: +351 21 967 74 79
info@eurodivisal.com - www.eurodivisal.com

