



reddot design award
winner 2007

cell | cubicle system



KEMMLIT – for discerning customers	Page 3
cell – designed	Page 4
cell – bionic story	Page 5
softcell cubicle system	Page 6
hardcell cubicle system	Page 8
classiccell cubicle system	Page 10
Planning aid – part 1	Page 12
variocell cubicle system	Page 14
variocell – project planning	Page 18
Planning aid – part 2	Page 19
cell – fittings	Page 20
cell – accessories	Page 21
cell – materials	Page 22
cell – colours	Page 23
KEMMLIT – ten good reasons	Page 23



KEMMLIT® | for discerning customers

KEMMLIT's philosophy is based on the unwavering belief in achieving the highest standards in production, logistics and service. This is what has made us the market leader.

For several decades, we have been providing our customers with consistently outstanding customised solutions. The key to our success is the way we combine state of the art production methods with uncompromising quality and innovative design.

That is why KEMMLIT has been recognised as one of the most innovative companies in Germany, receiving numerous awards and prizes.

Stringent quality control and a keen sense for balanced and aesthetic proportions ensure washroom facilities of the very highest standard.

Regardless of which KEMMLIT products you choose, you are assured of the highest production and design standards.



reddot design award
winner 2007



product
design
award
2006



DESIGNPREIS
2007
NOMINIERT



Innovationspreis
Architektur und Bauwesen



For the architects Regine Leibinger and Frank Barkow the attraction of working with KEMMLIT to develop the cell cubicle system is twofold:

On the one hand, it is an experiment with materials and surfaces, a theme which has been of particular interest to this architecture office for many years.

And on the other hand this assignment touches on a core skill of architects; namely, creating spatial quality – in this case in the very place where it has been most neglected in the past.

In the design process, experiences from the world of architecture were applied to that of product design. Both principles of creative design and various techniques of metal surface processing found their application in this case.

The cell cubicle products grew out of the desire to break away from the principle of smooth, flat interior surfaces, and instead create space and atmosphere using basic materials.

The German-American firm of Barkow Leibinger Architects was founded in 1993 in Berlin. The range of projects it handles varies from industrial construction to public buildings, although archetypal details have frequently been applied in all areas of their work.

cell cubicle system
designed by barkow leibinger



In the beginning was nature!

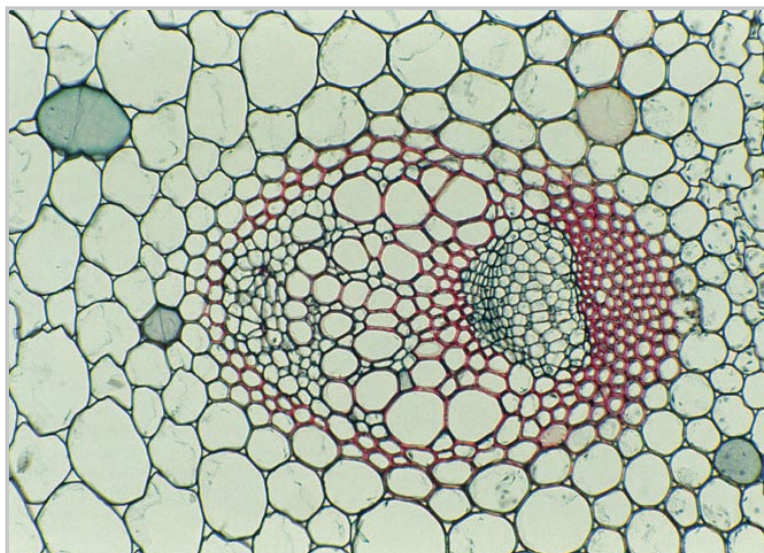
For the design of the cell cubicle system the architects Regine Leibinger and Frank Barkow adopted bionic principles.

The model that inspired them to create for this new cubicle system from KEMMLIT was soft and honey-comb-like cell structures.

The optical appeal of cell lies in the play of round forms and corners in combination with a clear concentration on essentials. In addition to its clear design it also exhibits an impressive utility value.

A classic example of versatility cell, with its softcell, hardcell, classiccell and variocell models, constitutes a quality system solution for modern cubicle design that is welcome wherever architecture, design and individuality are appreciated. Whether low-key or exciting, minimalist or extravagant.

“Bionics – applying the lessons of nature to technology and design.”



softcell | natural curves



reddot design award
winner 2007

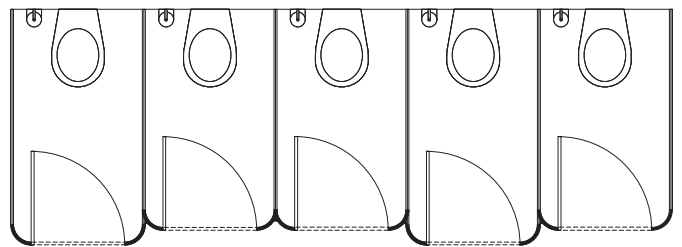


Pure aesthetics! Thanks to its design inspired by natural models softcell produces a soft spatial quality in public washroom facilities. As a result, these spaces where one's gaze normally tends to get lost between uniformly smooth walls become designed locations.

The technical elements of the system such as the supporting legs or head rails, are deliberately obscured and thereby conform to the idea of a new visual landscape.

softcell's appearance can be further individualised through a selection of metal surfaces. The alternatives available to clients and architects range from aluminium to coated steel, or various structured stainless steel surfaces.

softcell was awarded the 2007 reddot design award.



hardcell | strong structure, folded design



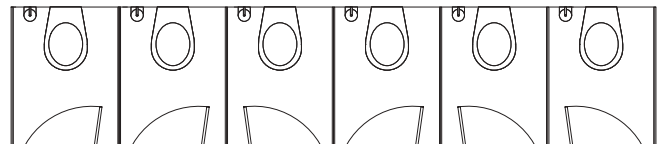
reddot design award
winner 2007



Unique! The design of the innovative hardcell cubicle system was inspired by nature and the honeycomb structure of cells. The independent design of hardcell is particularly expressed in the asymmetricaly folded front elements.

The unmistakable impression produced by this cubicle system results from the alternately broad and narrow front panels. The use of lines in the design of hardcell introduces a strict yet striking aesthetic quality to public washrooms. The unique 42 mm thick panels made of stainless steel, aluminium or steel strengthen the visual impact.

hardcell was awarded the 2007 reddot design award.



classiccell | smooth surfaces



classiccell – purity of form and clarity of design. Already a design classic! Timelessly elegant and straight-lined.

The smooth-surfaced front with welted doors, concealed edges and supporting legs produces a graceful design that appears to float above the ground. The variety of possible metal surfaces permits an individual classic design of washroom facilities.

In the case of single niche cubicles and free-standing corner solutions the rectangular stabilizer is positioned at the front in typical classic design.

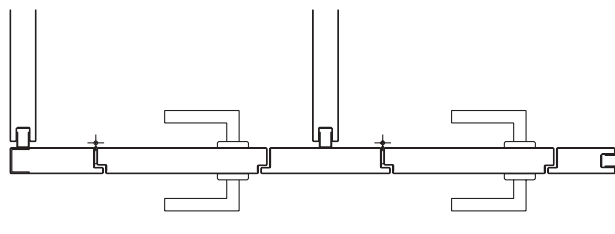
classic cell | floor to ceiling



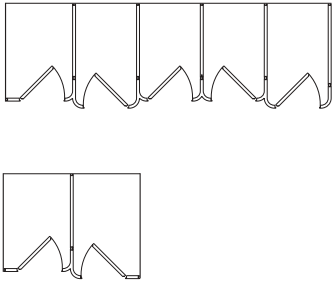
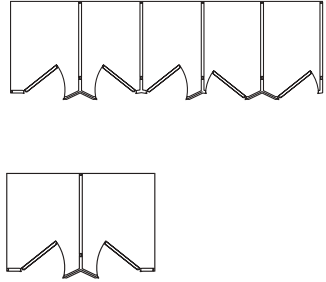
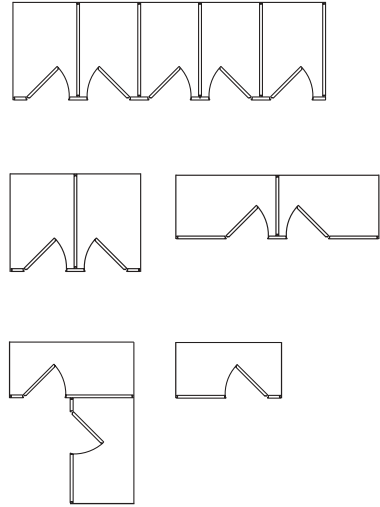
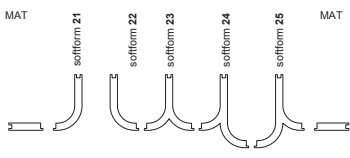
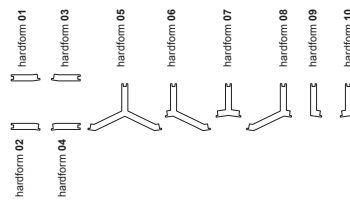
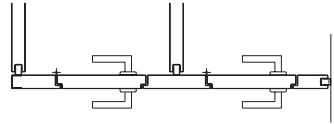
classiccell – privacy! The front elements are perfectly integrated into the toilet facility thanks to shadow gap connection to ceiling, walls and floor.

The dividing walls of 42 mm floor-to-ceiling closed composite elements with special middle layer guarantees a high degree of privacy and optimal sound reduction. classiccell is also ideally suited to brick-built partition walls.

The doors are designed with narrow gaps between ceiling and floor, thus ensuring optimal ventilation.



cell | planning aid – part 1

cubicle system	softcell	hardcell	classiccell
layouts:	rows of cubicles for any kind of room layout	rows of cubicles for any kind of room layout	rows of cubicles and single cubicles for any kind of room layout – special solutions on enquiry
			
cubicle depth:	up to 1600 mm joint with shadow gap; > 1600 mm joint with shadow gap joint and additional supporting leg	up to 1600 mm joint with shadow gap; > 1600 mm joint with shadow gap joint and additional supporting leg	up to 1600 mm joint with shadow gap; > 1600 mm joint with shadow gap joint and additional supporting leg
cubicle width:	flexible, minimum wall connection pilaster size 130 mm, joints with shadow gap	flexible, minimum wall connection pilaster size 130 mm, joints with shadow gap	flexible, minimum pilaster size 180 mm, joints with shadow gap
cubicle height:	2000 mm, alternative 2135 mm, special heights on enquiry	2000 mm, alternative 2135 mm, special heights on enquiry	2000 mm, alternative 2135 mm, special heights on enquiry
panels:	42 mm thick sandwich construction, alternatively available in aluminium, steel or stainless steel with foam core inlay	42 mm thick sandwich construction, alternatively available in aluminium, steel or stainless steel with foam core inlay	42 mm thick sandwich construction, alternatively available in aluminium, steel or stainless steel with foam core inlay
formed parts:			
	formed parts with frames and noise insulation	formed parts with frames and noise insulation	welded pilasters and doors (smooth front) with noise insulation
doors:	rebated; 42 mm thick sandwich construction with foam inlay	rebated; 42 mm thick sandwich construction with foam inlay	welded; 42 mm thick sandwich construction with foam inlay
change of door opening:	having both inward and outward opening doors in one front is not possible	having both inward and outward opening doors in one front is not possible	having both inward and outward opening doors in one front is not possible
door widths:	from 570 mm up to 980 mm (nominal size); special sizes are possible	from 570 mm up to 980 mm (nominal size); special sizes are possible	570 mm / 620 mm / 750 mm / 980 mm (nominal size); special sizes are possible



cubicle system	softcell	hardcell	classiccell
head rail:	recessed; Aluminium square profile 40x30 mm, available in stainless steel as an option	recessed; Aluminium square profile 40x30 mm, available in stainless steel as an option	recessed in case there are more than one cubicle; above the elements for single cubicles. Aluminium square profile 40x30 mm, available in stainless steel as an option
floor-to-ceiling:	—	—	floor-to-ceiling high panel and door elements max. 2800 mm high; ceiling connection integrated in the frame of the suspended ceiling – timely planning is necessary!
door stop:	welted door and pilaster	welted door and pilaster	welted door and pilaster
wall connection:	shadow gap 10 mm with aluminium profile	shadow gap 10 mm with aluminium profile	shadow gap 10 mm with aluminium profile
support optimised construction (sus- pended front):	standard (wall connection pilaster max. 250 mm); in case of plaster board walls without inlay supporting legs in the front always required	standard (wall connection pilaster max. 250 mm); in case of plaster board walls without inlay supporting legs in the front always required	standard for niche cubicles or corner cubicles, up to a wall connection pilaster size or partition wall axis of 250 mm; in case of plaster board walls without inlay supporting legs in the front always required
under panel clear.:	standard 150 mm; 80 mm – 200 mm possible	standard 150 mm; 80 mm – 200 mm possible	standard 150 mm; 80 mm – 200 mm possible
without u.p.c.:	—	—	with shadow gap and ventilation underneath the door (30 mm)
supporting legs:	supporting legs screwed to floor made of stainless steel with stainless steel cover sleeve; also available in aluminium with aluminium cover sleeve	supporting legs screwed to floor made of stainless steel with stainless steel cover sleeve; also available in aluminium with aluminium cover sleeve	supporting legs screwed to floor made of stainless steel with stainless steel cover sleeve; also available in aluminium with aluminium cover sleeve
supporting legs glued to floor:	—	—	available, except for support optimised construction
hinges:	standard aluminium 2-part hinge, as an option stainless steel 2-part hinge	standard aluminium 2-part hinge, as an option stainless steel 2-part hinge	standard aluminium 2-part hinge, as an option stainless steel 2-part hinge
double latch lock, door lever handle:	with nylon door handle and indicator, aluminium furniture as an option, stainless steel furniture as an option	with nylon door handle and indicator, aluminium door handle as an option, stainless steel door handle as an option	with nylon door handle and indicator, aluminium door handle as an option, stainless steel door handle as an option
single latch lock, door knob:	with nylon door knob and indicator, aluminium furniture as an option, stainless steel furniture as an option	with nylon door knob and indicator, aluminium furniture as an option, stainless steel furniture as an option	with nylon door knob and indicator, aluminium furniture as an option, stainless steel furniture as an option
single turning knob:	available as an option	available as an option	available as an option
cut-outs for protruding walls:	only in the partition wall with bracing U-profile (individual parapet panels available)	only in the partition wall with bracing U-profile (individual parapet panels available)	only in the partition wall with bracing U-profile (individual parapet panels available)
anteroom solution:	partition with one door, construction in classiccell	partition with one door, construction in classiccell	partition with one door
urinal screen:	made of 30 mm sandwich construction or made of toughened safety glass as an option	made of 30 mm sandwich construction or made of toughened safety glass as an option	made of 30 mm sandwich construction or made of toughened safety glass as an option
modesty screen:	made of 30 mm sandwich construction or made of toughened safety glass as an option	made of 30 mm sandwich construction or made of toughened safety glass as an option	made of 30 mm sandwich construction or made of toughened safety glass as an option

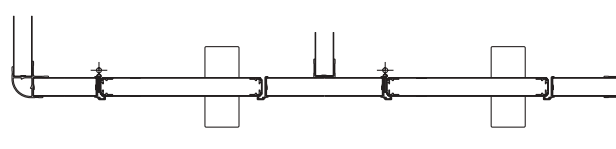
variocell | clearly defined and variable



variocell – distinctive character. This is a prefabricated structure that is virtually unmatched in the number of possible combinations it offers.

The 30 mm composite elements of aluminium or steel contain a special sound absorbent filling layer. Reinforcement inlays of aluminium at the necessary points ensure secure and lasting reinforcement of attachments and fittings.

The high quality and attractive aluminium profiles guarantee stability and are available in a variety of colours – in satin anodised or powder-coated aluminium.



variocell | floating appearance



variocell combines creative planning and precise ergonomics.

With this optimised solution the technical elements such as supporting legs and head rail are integrated into the dividing walls rather than the front, and are therefore invisible to the observer. This creates the impression of a floating structure!

Alternatively the head rail can also be built into the front, either in smooth-faced or oval look in combination with frontal supporting legs.



Separating the anteroom

variocell makes it possible to easily create a separate entrance area for a washroom facility using either room-high or supported partitions.

Changing cubicles

Suspended changing cubicles with central locking and an integrated bench are often found in swimming pools or the wellness and leisure sectors. variocell in aluminium is ideally suited to these particular requirements and climatic conditions.



Suspended cubicles

Attractive appearance. Solid aluminium suspended head rail means there is no need for ground supports. This technically refined solution is excellently suited to protecting insulation layers and underfloor heating and makes for easier and less costly floor maintenance.



Shower partitions

Wall elements and panels are manufactured in sea-water-resistant aluminium. Ideally suited for use in all wet spaces.

Special solutions

With floor-to-ceiling cubicles, cubicles for the disabled, changing cubicles, upper glass panels, upper panels, space saving doors, swing doors, sliding doors, urinal screens, modesty screens, angular wall connections, angular pilasters, finger protection, combination with lockers, shelving and benches from KEMMLIT – variocell offers almost limitless combinations and possibilities.



variocell | in detail



Corner and joint elements, door stop and wall connection are all part of the tried and tested, flexible profile system from KEMMLIT.

The horizontally mounted head rail is available in oval, angular and smooth-surfaced models; in satin anodised or powder-coated aluminium, as well as in fine matt stainless steel. To ensure exact fitting joints the stabilizer is fitted with a fine end collar.



With the support optimised variocell solution both the head rail and supporting legs are fitted along the partition panels of the cubicles, thus out of sight.



The wall connection at the front can be constructed using shadow gaps or U-profiles. Angular wall connections are also possible.

The aluminium door stop profiles are fitted with rubber cushions to avoid loud door slamming.

The walls and doors are made of 30 mm composite panels with a foam inlay for sound absorption. If particularly stringent fire safety is required it is possible to include specially developed canted metal inlays.

variocell can be installed with a variety of different locks and fittings.

The KEMMLIT sales representatives will be happy to explain the advantages of variocell in detail.

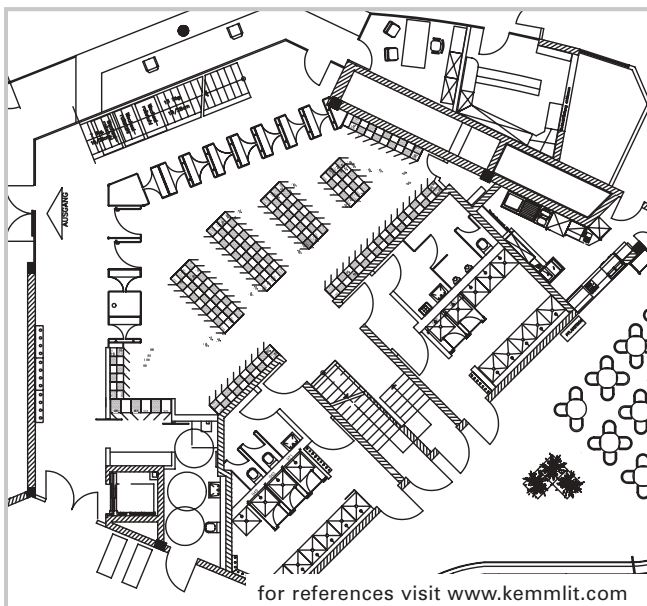




KEMMLIT stands for products and services, by architects for architects.

KEMMLIT will support you in planning large-scale projects such as trade exhibitions, swimming complexes, industrial constructions, representative office buildings as well as in implementing smaller projects such as gyms, spa areas or exclusive washroom facilities.

A team of professionals at KEMMLIT – composed of architects and engineers – will work with you to design washroom facilities that meet your wishes and requirements.



Our advisory service.

Your personal KEMMLIT consultant can offer you advice on site. Planning bids, colour schemes, model presentations, measurements are just some of the advisory services we offer.

The development zone.

German ingenuity and innovation. Design and highest product standards. Laboratory tests and cooperation with renowned architects. These are the factors that guarantee our products' success.

Project management services.

The KEMMLIT project team communicates, organises and implements in a fast and reliable manner thanks to a high level of professional expertise and the latest technology. KEMMLIT is also the partner of choice for one off special solutions.

Reliable planning.

Our project engineers ensure that your project runs smoothly and according to plan. This ensures that you keep within your budget and time schedule.

The production technologies.

Craftsmanship meets high-tech – Made in Germany. Projects are managed in a customised and tailored manner.

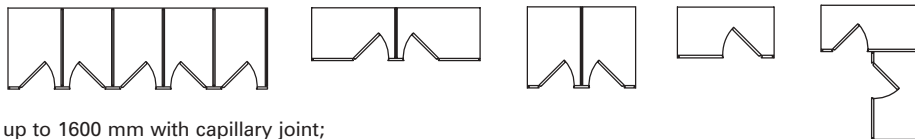
The quality installation.

Our experienced and company-trained fitters ensure professional installation. On time, and perfectly coordinated.

The total service.

Everything from one source. A partner you can rely on. Talk to us about what you need!

cubicle system
layouts:
variocell

rows of cubicles and single cubicles for any kind of room layout – **special solutions on enquiry**

cubicle depth:

up to 1600 mm with capillary joint;
> 1600 mm joint with H-profile and additional supporting leg

cubicle width:

flexible, minimum wall connection pilaster size 40 mm, joints with H-profile

cubicle height:

2000 mm as an option 2135 mm – special height on enquiry

panels:

30 mm thick sandwich construction with foam inlay

doors:

flat door stop, 30 mm sandwich construction with foam inlay

change of door opening:

having both inward and outward opening doors in one front is possible

door width:

570 mm / 620 mm / 750 mm / 980 mm (nominal sizes) – special widths on enquiry

door stop:

aluminium door stop profile with flat door stop

swing doors:

single and double leafed

sliding doors:

single and multi-leafed

space saving door:

folding door to save space

head rail:

attached above the front (recessed* as an option)
1.) special square aluminium profile* 42x43 mm
2.) special oval aluminium profile 55x43 mm
3.) stainless steel profile* 40x30 mm or 30x40 mm

floor-to-ceiling:

with embracing U-profiles and attached upper panels

upper panel:

same material as panels; up to 650 x 1800 mm without joint

upper glass panel:

made of toughened safety glass 6 mm or plexiglass 5 mm, enclosed in aluminium profile frame

wall connection:

enclosing U-profile; shadow gap 10 mm with aluminium profile as an option

angular wall conn.:

possible with special profile – shadow gap not available

angular front panels:

possible with special profile – shadow gap not available

support optimised construction (suspended front):

available for niche cubicles or corner cubicles, up to a wall connection pilaster size or partition wall centre of 250 mm; in case of plaster board walls without inlay supporting legs in the front always required

suspended cubicle:

with suspended head rail; 50 x 150 mm or 50 x 200 mm

under panel clear.:

standard 150 mm; adjustable heights from 80 – 200 mm

without u.p.c.:

panels with 40 mm plinth; doors with 10-40mm under panel clearance (ventilation)

supporting legs:

supporting legs screwed to floor made of aluminium with nylon cover sleeve; available with satin anodised aluminium flat cover sleeve as an option; available in stainless steel with a flat stainless steel cover sleeve as an option

legs glued to floor:

available for construction with supporting legs in the front (except for free-standing cubicles)

hinges:

standard aluminium 2-part rising butt hinge; as an option 2-part hinge made of stainless steel or aluminium

single latch lock, door knob:

standard with nylon door knob and indicator; aluminium furniture as an option;
stainless steel furniture as an option

double latch lock, door lever handle:

with nylon door handle and indicator; aluminium furniture as an option;
stainless steel door handle as an option

single turning knob:

made of satin anodised aluminium

central locking:

central locking system situated underneath bench seating or as an overhead system

cut-outs for protruding walls:

with bracing U-profile or parapet panels

curtain rails:

integrated in the head rail, made of satin anodised aluminium

climb over protection:

solid tube profiles made of satin anodised aluminium

anteroom solution:

partition with one door

standard urinal screen:

30 mm sandwich construction made of aluminium or steel sheets with aluminium or stainless steel panel holders



Door knobs

Ergonomic door knob in nylon, aluminium or stainless steel with vacant/occupied indicator. Also available with single-hand locking device in anodised aluminium.



Door handles

Designer handle in nylon, aluminium or stainless steel with vacant/occupied indicator.



Supporting legs

Robust and attractively shaped legs at the front or alternatively under the partition panels for greater stability. With stainless steel core and M12 thread with infinite height adjustment. In aluminium and stainless steel models with durable cover sleeves. Legs also available with coloured nylon cover sleeves in the variocell system.



Hinges

Stable self-closing two-part rising butt door hinges in aluminium or alternatively as elegant two-part edge hinges in aluminium or stainless steel.

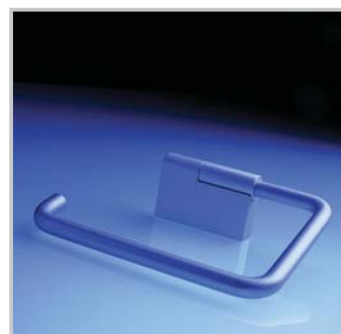
On request variocell can also be fitted with finger protection and pivot bearing.





Cubicles and accessories are part of a single system. Please bear this in mind when designing your washroom facilities. KEMMLIT offers an almost unlimited range of options with its exclusive stainless steel, aluminium and nylon accessories.

The range of accessories is grouped into three product lines – Alu Line, Inox Line and Value Line. In terms of material, form, colour and design, all of these accessories are suitable for top-class washroom facilities.



Special wall reinforcements and inlays are integrated into the high-quality cell cubicle systems in order to ensure lasting and vandal-proof use of the accessories.

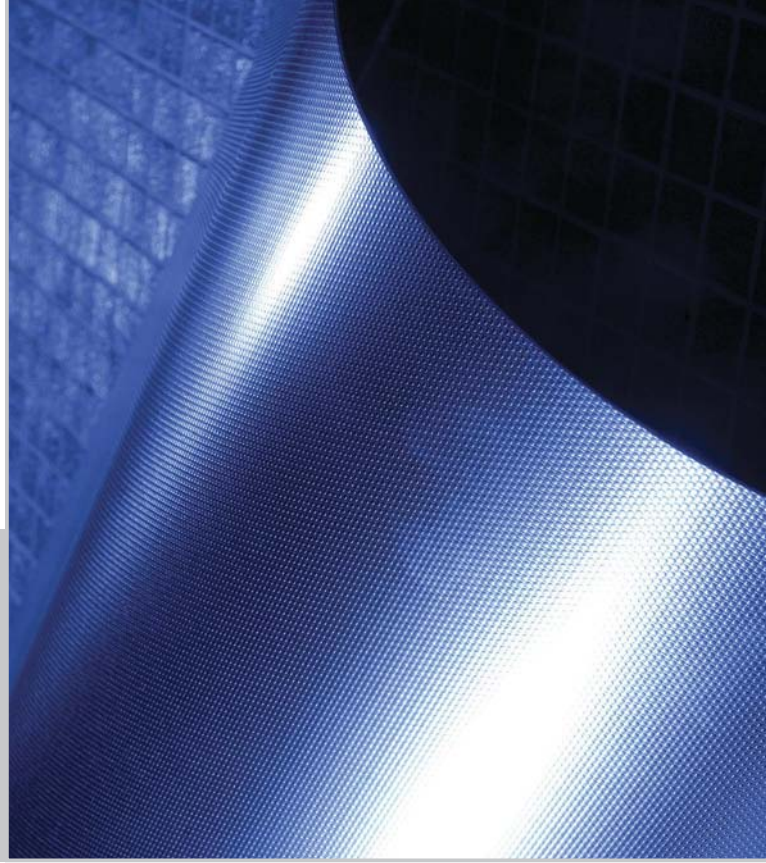
They are mounted in one site visit by professionally trained and experienced KEMMLIT fitters. Generally the installation costs are included in the price of a cubicle system.



We are also happy to create special solutions for you. Talk to your personal advisor to explore all design and technical options. He will be happy to fill you in on the details.

Technical details for the accessory range can be found in our accessories brochure. Order this now at www.kemmlit.com





Aluminium

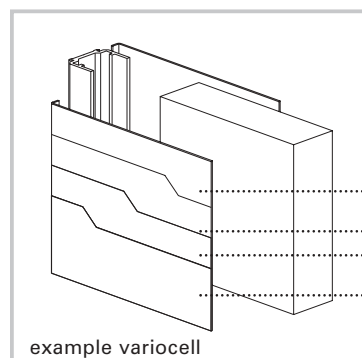
Aluminium, which is widely used in ship-building is resistant to corrosion at its cut edges. It is also excellently suited to recycling. The special 'crystal coat' surface is environmentally friendly and easy to clean. Thanks to its UV-resistance, it is also suitable for outdoor locations.

Steel

The zinc-dipped steel has a visible colour coating. The Starline colours also have a reinforced polyester coating with a portion of embedded perspex. This increases its resistance to scratching and UV light. On the inside, there is also a protective varnish coating to ensure durability.

Stainless steel

The stainless steel can be individually applied in a variety of different surfaces and structures. This material is anti-corrosive, easy to clean and maintains its elegant look for many years.



Aluminium sheeting in
salt-water resistant alloy
Chromating
Polyester primer
Polyurethane finish
'crystal coat'

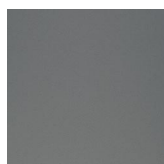
steel sheet:



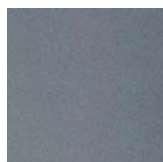
white 9095



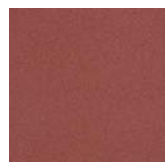
pale grey 7095



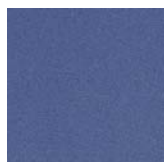
metal grey 7507



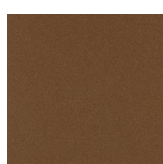
silverstar 7303



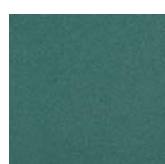
redstar 3307



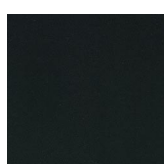
bluestar 5307



brownstar 8307



greenstar 6307



black 7907

aluminium sheet:



white 9095



pale grey 7095



anthracite 7603



pale blue 5095



pale yellow 1095



pale green 6095



dark blue 5603



dark red 3603

stainless steel:
available in
various structures
and surfaces on
enquiry

Profiles*, hinges*, supporting legs* and furniture (*only for variocell):



white
02



manhattan
05



anthracite
03



dark blue
04



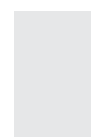
red
11



dark red
01



yellow
10



satin
anodised 08



Stainless
steel
V2A 12

Due to typographic reasons, the colours shown may differ slightly from the original colour.

KEMMLIT® | ten good reasons

1. 100 years of experience and market leadership
2. Extensive product range
3. Product innovation with top design
4. Top quality in terms of material and processing
5. Harmonising solutions
6. Individual consulting service by professional sales representatives
7. Quick quotation processing
8. Prompt and on-schedule delivery
9. Professional installation on site
10. One-stop service

For further information and references www.kemmlit.com

**Individual
sanitary fittings
by KEMMLIT**

For example:

Changing cubicles
Toilet cubicles
Shower cubicles
Locker systems
Vanity units
Bench seating
Baby changing stations
Doors and frames
Accessories

**KEMMLIT-
Bauelemente GmbH**

Maltschachstraße 37
D-72144 Dusslingen
Germany

Tel.: +49 (0) 7072 /1 31-0
Fax: +49 (0) 7072 /1 31-150

www.kemmlit.com
info@kemmlit.com

